

# CARNIVAL GLASS ACTION!

March 2024 A Joint Publication of:



Texas Carnival Glass Club



<b>INSIDE:</b>
<b>Page 2 - HOACGA President Letter</b>
<b>Page 3 - HOACGA Sch. Of Events</b>
<b>Page 4 - HOACGA Auction Photos</b>
<b>Page 6 - HOACGA Registration Form</b>
<b>Page 7 - HOACGA Room Displays</b>
<b>Page 8 - Morning Glory Tumblers</b>
<b>Page 9 - Texas Vice President Letter</b>
<b>Page 10 - Learning Every Day</b>
<b>Page 12 - Carnival Glass Colors</b>
<b>Page 13 - On the Hunt With Corky</b>
<b>Page 15 - Carnival Addict?</b>
<b>Page 18 - Imperial's Windmill</b>
<b>Page 22 - The Stretch Glass Society</b>
<b>Page 23 - Auction Calendar</b>

Teaser photos are out for the upcoming HOACGA auction. See HOACGA photos on pages 4 and 5.

## HOACGA President's Letter

It's less than two months until the HOACGA 2024 convention at the **Airport Embassy Suites Hotel, Kansas City, MO.** (same hotel every year) The room rate is \$139/day (plus tax). The reservation deadline is Monday April 1st, 2024. For reservations call 816-891-7788 or for easy online registration, go to the home page of HOACGA.com and click on the hotel reservation box above. Internet is included in the room rate. **Parking fee is \$10 per night** and table rental is \$25 length of stay (includes Tax).



### 2024 Convention Itinerary – April 24-28, 2024

- **Breakfast and Managers Reception:** included as part of the room rate. This is a special opportunity to visit with old friends and to meet new collectors.
- **Special Raffle:** There will be a 50/50 Raffle to support the club.
- **Rooms:** All rooms are two room suites with a small refrigerator, a window for showing and viewing your glass from the outside. Use the registration form to let us know your choice of a KING or DOUBLE room.
- **Room Displays:** One of the traditional aspects of Carnival Glass conventions. They are a vital and educational part of the convention. You are encouraged to bring a room display for all of those in attendance to view and appreciate. See page 7 for more information on the room display categories, each of which is awarded a prize.
- **Room Sales:** Every year several attendees sell glass from their rooms. And it is a great opportunity to find something surprising.
- **Presentations:** A Friday morning educational presentation entitled “Looking at Iridescence” will be given by Kenda Jeske and Kathy Johnson . And the Friday luncheon will be followed by a presentation called “It’s International” by Pat Rottachaeser.
- **Auction:** Seek Auctions is proud to present the Tom and Ann Bumpass collection. See the teaser auction photos on pages 4 and 5.



# HOACGA Schedule of Events

## Daily

Breakfast in Lobby provided by Hotel

5:30pm to 7:30pm – Manager’s Reception in Atrium



## Wednesday – April 24th

Registration available – See Kathi Johnson

6:00pm to 7:00pm – Sandwiches / Cookies

## Thursday – April 25th

Registration open outside of Salon D from 10am to 4pm

6:00pm to 7:00pm – Pizza on the Party Deck

7:00pm – **Trivia game on the Party Deck**



## Friday – April 26th

Registration open outside of Salon D from 8am to 3pm

9:30am – **Kenda Jeske and Kathy Johnson present ‘Looking at Iridescence’**

Noon – **Banquet Luncheon & Pat Rottschaefer presenting ‘It’s International!’**

2pm – **Annual Business Meeting**

4:00pm to 8:00pm – Preview Auction Glass



## Saturday – April 27th

7:30am to 9:30am Preview Auction Glass

9:30am – Seeck Auctions present the Tom & Ann Bumpass Collection

6:00pm – People meet in the hotel restaurant for dinner.

## Sunday – April 28th

Convention survivors “One Last Breakfast” before saying goodbye

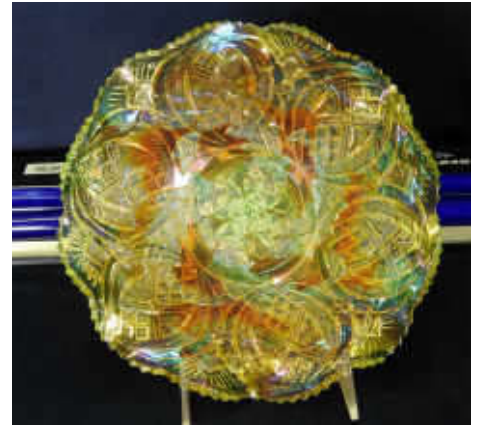
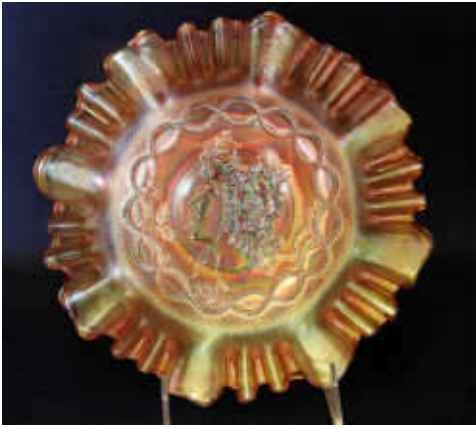
# HOACGA Auction Teaser Photos



- 1 – Millersburg Ohio Star vases in amethyst & marigold
- 2 – Brocaded Acorns pitchers and many other pieces
- 3 – Fantastic selection of Red pieces
- 4 – Millersburg Mitered Ovals vases in green, marigold & amethyst
- 5 – Birmingham Age Herald pieces in the 4 shapes known
- 6 – Square Farmyard bowl
- 7 – Lily of the Valley pitcher in blue
- 8 – Peter Rabbit 9" plate in green



## HOACGA Auction Teaser Photos - Cont.



- 9 - Several covered frogs
- 10 - Goddess of Harvest 3 in 1 edge bowl in marigold
- 11 - Peacock at the Fountain ftd fruit bowl in aqua opal
- 12 - Peacock at the Fountain compote in green
- 13 - Millersburg Whirling Leaves bowl in vaseline
- 14 - Millersburg Pipe Humidors in green, marigold & amethyst
- 15 - Millersburg pieces in blue
- 16 - S-Repeat punch set in purple



**Heart of America Carnival Glass Association - HOACGA**

**2024 Convention Registration Form**

**April 24-28, 2024**

**Embassy Suites Airport Hotel – 7640 NW Tiffany Springs Pkwy, Kansas City, MO**

**816-891-7788**

Name (s): \_\_\_\_\_

Street: \_\_\_\_\_

City/State/Zip: \_\_\_\_\_

Phone: \_\_\_\_\_

Email: \_\_\_\_\_

**Convention Registration:**

Registration fee	# attending _____ @ \$20 each	\$ _____
Wed. evening: Free dinner- Party Deck (Hoagie sandwiches/fixings, cookies)		Free
Thur. evening: Free dinner- Party Deck (Pizza and Salad Party)		Free
Fri. Luncheon and Presentation	# attending _____ @ \$35 each	\$ _____

50/50 drawing (select your square on a 10 x 10 board – 100 spaces)

\$10 per square (Prizes totaling up to \$500) # tickets \_\_\_\_\_ \$ \_\_\_\_\_

Convention Total: \$ \_\_\_\_\_

Refunds for meals will not be given for cancellations received after April 17th

(Convention registrations fee will be refunded for cancellations).

Annual Membership (includes 5 emailed newsletters) Free

Mailed Hardcopy Newsletter Subscription \$35 \$ \_\_\_\_\_

Be a Supporting Member of the Texas Carnival Glass Club \$10 \$ \_\_\_\_\_

Membership Total: \$ \_\_\_\_\_

Grand Total: \$ \_\_\_\_\_

Make checks payable to: HOACGA, mail to Kathi Johnson, 515 Greenway Point Drive Janesville, WI 53548

You can also register online at [www.hoacga.com](http://www.hoacga.com) where Paypal is accepted.

I will have glass to sell or I will have a Room Display and thus I need a hall window. YES / NO

I prefer a KING room or a DOUBLE room. (Please circle one)

## Don't Forget your Room Displays for the HOACGA Convention

At each convention, HOACGA encourages room displays as they are easily viewable through each room's window to the hall. Attendees so appreciate the effort.

Be creative and share your carnival glass with others.

Displays are judged by an volunteer committee and a winner is chosen for each of the following categories:

- Same Maker
- Same Pattern
- Same Color
- Same Shape
- Own Theme

**\$50 prizes for each of the five themes and a \$100 prize for "Best Overall"**

Attendees then vote on their favorite display and an award is presented for "Best Overall Display".



## Educational Tumbler Series by John and Lucile Britt

### MORNING GLORY TUMBLERS

The Morning Glory is a super star in any tumbler or carnival glass collection. Some have rated this tumbler as high as fourth in their favorite tumbler list. Most tumbler collectors would rate it at least in their top ten patterns. The tumblers can be found in amethyst, marigold and green. They are beautiful, very rare and most desirable in all of these three colors. Amethyst is the color that is most often found. We have seen very few in marigold and green. Tumblers in this pattern are usually outstanding in color and iridescence. The artist who drew this pattern had to be some kind of genius. The fine detail and workmanship of this pattern are super in every respect.



The Morning Glory tumblers are rather small in size compared to most other carnival glass tumblers. They measure 3 3/4 inches high, have a rim diameter of 2 7/8 inches and narrows to a 2 1/8 inch base. The base has a 24 point star type figure that is pressed into the underside of the bottom. Three Morning Glory blossoms are evenly spaced around the tumbler and connected by a graceful flowing vine. From this large vine flow several smaller vines incorporating a number of leaves to fill in the pattern where it is needed. Behind these flowers and leaves is a background of twenty one panels that blend in will to make this a most artistic pattern.

The tall streamlined Morning Glory tankard has done a lot for the great popularity of this pattern. This tankard would be at the top of most carnival glass collectors water pitcher list. They are beautiful and very desirable, but unfortunately most of us will never be able to own one of these fantastic tankards, due to their extreme rareness.





## VICE-PRESIDENT'S COLUMN

By Bob Sage



TCGC Members. By the time you read this our 45<sup>th</sup> Convention will likely be over. We'll have a newly elected President for our club, will have handed out the 45<sup>th</sup> Anniversary souvenir vases, will have seen some rare amazing glass from our presenters, and caught up with some of our Carnival Glass friends. I suspect most of us will have already found a place in their homes (other than the "transition table") for their 45<sup>th</sup> Anniversary Vase as well and are looking forward to the next leg in their 2024 Carnival Glass hunt.

From my perspective 2023 was a great year for Carnival Glass with the exceptional variety, quality, and amount of glass available. As Sandy and I continue to fill in gaps in our collection we find that it's more down to can we afford it (or really need it) rather than can we find it. I'd love to say we have figured out the Carnival Glass market and are playing it like professionals, but unfortunately, it seems that the pieces we want/need are the same ones that a lot of other people seem to want/need. We still have more than enough pieces that are "on the list," and we've had to defer several pieces to the next auction or sale. That is likely part of the attraction of collecting to be honest.

We continue to hit local Antique stores and have seen a small resurgence of Carnival Glass available in a couple of our local shops. Although it is easy to look with some degree of concern for the viability of Iridized Glass clubs across the country, I can't help but be a little optimistic that our hobby will continue to thrive. It's worth taking a pause and look at the collective community as a whole: there are 19+/- active clubs, most with histories going back decades, some already having survived more than half a century. The newest member of this community, Iridescent Nation, will celebrate its 20<sup>th</sup> anniversary this year and, through the mentorship of traditional clubs and members, is holding its own with potential "new to our hobby" collectors. "Hooked On Carnival" is even younger joining the community close to 10 years ago as an on-line resource for collectors. It currently reaches 650 households daily with close to 6000 Facebook followers.

Sure, clubs have had to reduce events, a few have had to shut down, and most don't look the same as they did when we joined, but the reality is that change is the constant and not the exception. And yes, more change is likely to occur, venues will change, clubs may consolidate, and revered members will pass on. But the glass will still be there, and what was a "contemporary" piece is now approaching its 65<sup>th</sup> anniversary and classic pieces are moving close 120 yrs. old. As my mom, the late Dolores Sage, used to say to us about collecting contemporary Carnival Glass, "It will all be old someday." We have more than 60+ auctions a year selling Carnival Glass alone and 13 conventions I can count. Given that level of activity in our hobby, it's hard to see an imminent demise. It isn't a very bad run for 50+ years, and I see no reason to believe that it won't continue.

I prefer to be an optimist and as long as I can walk by our cabinets, get captured by a pretty piece of glass, and struggle to recall the capture of that glass, I'll continue to be one. So, on that note, I'd like to wish you a very successful and healthy 2024 and hope to see some of you at conventions in the upcoming months. May you bring home that special piece that brings a smile to your face in 2024.

# Learning Every Day

## by Kathi & Galen Johnson

When we started seriously collecting Carnival Glass, our mentors were Diane and Dean Fry. They lived in San Diego at the time and were working on a project (for the San Diego County and Southern California Carnival Glass Clubs) taking catalog pages from old Butler Brothers wholesale catalogs that contained Carnival Glass advertising, putting them into a 'Butler Brothers Catalog.' They attempted to print 250 copies in 1994 (we think they ended up with about 220) of the book. In their acknowledgments, she said this:



*Without support and encouragement from Frank M. Fenton and Charlotte Williams through their generous contribution in loaning their beloved original Catalogs for the research required, this book would never have been possible.*

*A note of thanks too Carl O. Burns, also, for sending material from an original Rouss catalog.*

*Many hours spent in pursuit of an interested printer to work with us presented Dean Fry with a tedious task.*

*I am grateful that everyone involved has been up to the challenge.*

*Funding for this publication has been provided by combined effort of San Diego Co. and Southern Cal. Carnival Glass Clubs.*

*Serving to preserve an area of history relating to beginnings of Carnival Glass and the educational aspect surrounding that, is the purpose intended.*

*The idea for such a reproduction of material was born of the premise that future generations of Carnival Glass Collectors will benefit; perhaps even more than those of us currently involved.*

*My sincere hope is that this compilation of fact is as enjoyable to readers as it has been to me, while creating the format.*

*Diane Fry*

The book is up in its entirety on the Hooked on Carnival website. It's big, so it takes a little while to load! It can be found in the Library under catalogs.

They indexed pattern names so that you could find the specific advertisements in the book.

Some patterns do not show up in the index but can be found by looking through the book. So, it's fun to page through it!

It's also very enlightening to discover what they called the patterns AND the shapes in the catalog. Remember, it's all about marketing!!! What would you assume the pattern is if we said 'deep daisy and fan cutting'? Or how about 'deep feather and star cutting'?

Here they are – the Millersburg 'Marathon' Jug Asst with Marilyn (deep daisy and fan cutting) and Feather & Heart (deep feather and star cutting) from the April 1912 editions of the Butler Bros. 'Our Drummer' catalog.



# Learning Every Day - Cont.

by Kathi & Galen Johnson

Please note that these are NOT the iridized versions, they are 'crystal' (aka clear) glass. The prices state that you can get a dozen for \$1.10, so you would have received six of each pattern. We know they were both done in a variety of Carnival Glass colors, but we don't yet have the advertisements listing those color prices.

Here is what they look like in Mari-gold (thanks to Seeck Auctions for the photos):

Below is another ad for many other Millersburg patterns (crystal), and the marketing used for the shapes was delightful and based on the descriptions of those shapes at the time.

Berry bowls, celery boat, deep nut bowl (maybe the rose bowl top right?),



**NEW "PACEMAKER" GLASSWARE ASSORTMENT—Crystal.**  
*Bigger and better than any ever before offered at this price.*

C1692: Extra heavy, deep cut pattern, best crystal, full finished, rest. comprises:

1/2 doz. 10 in. vase.	1/2 doz. 8 in. high footed fruit bowl.	1/2 doz. 9 1/2 in. flared salad bowl.
1/2 " 8 1/2 " berry bowl.	1/2 " 10x7 in. table dish.	1/2 " 3/4 gal. pitcher.
1/2 " 10 " celery boat.	1/2 " 5 3/4 in. footed jelly dish.	1/2 " 8 1/2 in. high footed fruit compote.
1/2 " 7 " deep nut bowl.		
1/2 " 1/2 gal. jug.		
1/2 " 8 in. berry bowl.		

Total 6 doz. tierce, 160 lbs. Doz. Out

high footed fruit bowl (compote), table dish (oblong dish), footed jelly dish (small compote), flared salad bowl, high footed fruit compote (compote), vase and the two previously described 'jugs' now as a '1/2 gal. jug' and a '1/2 gal. pitcher'.

Are we confused yet?? And the next ad the following year might call the same shape something different.

This is why we've all worked so hard to come up with a common description for the pieces so that we are all looking for the same thing, and it's also one of the reasons why newer collectors need to learn our 'tribal language' when collecting Carnival and Stretch Glass.

If you have a little time, check out the Butler Bros Catalog on Hooked on Carnival glass. You just might learn something new, too!!

OCTOBER, 1905. PRICES HEREIN NAMED SUPERSEDE ALL OTHERS.

## "Our Drummer"

### What Would YOU Do?

If you were in our place, subselling by catalogue only, what would you do to prove your value to the retailer?

Suppose you knew you were giving more for a dollar than merchant could possibly give, how would you go about it to make your trade know what you knew?

We cannot send men to their stores with samples, for that would do away with the very saving which makes our better values possible.

We send out each month a fully illustrated catalogue, of which this is a fair specimen, telling the truth about our goods and quoting guaranteed net wholesale prices.

We maintain extensive sample rooms in the three leading cities of America, so that every merchant who comes to market may see the goods with the price tags marked in plain figures.

To take all the risk off the buyer, every catalogue we issue prints the broad guarantee: "All goods sold with the privilege of returning within five days after receipt."

Under the circumstances, wouldn't you think the retail merchant owed it to himself, not to us, to take the next step and afford us an opportunity for the only test satisfactory to either of us—comparison in his own store?

**THE "SALE" of Glassware, Crochery and China on the golden rod pages is perhaps the most sensational stroke of merchandising we have ever made in any catalogue. Just over the page.**

**OCTOBER 1905**  
 CATALOGUE NUMBER **551**

**BUTLER BROTHERS NEW YORK**  
 EXCLUSIVE AGENTS OF GENERAL MERCHANDISE—WHOLESALE ONLY.

# CARNIVAL GLASS COLOR

By Rod Kaps

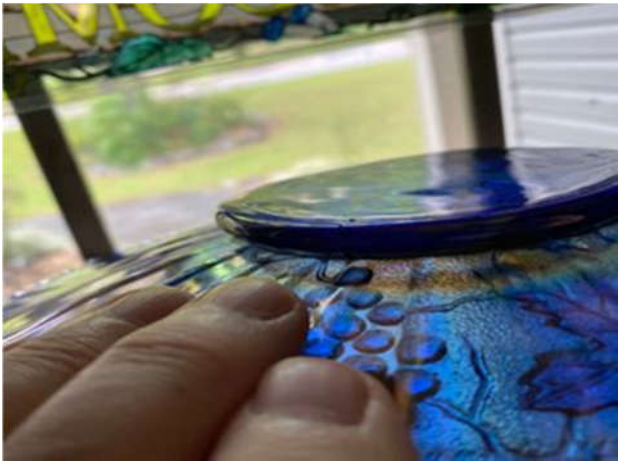
To determine the glass color of Carnival Glass it is necessary to not let the iridescent colors confuse you. The best way to accomplish that is to hold a piece of Carnival Glass upside down and up to a good light and look through the Marie (base). This is the best way to see the actual glass color. I prefer a 5000k or white light for best results. Sunshine works too.



**Amber**



**Ice Blue**



**Cobalt Blue**



**Sapphire**



**Renninger**



**Aqua**

Cont. on Page 14

## (On the Hunt series)

### Hindsville, Arkansas, Estate Sale By Corky Cotton

Just leaving an estate auction in Hindsville, Arkansas, and came away with some goodies. Managed to walk away with a marigold 14-piece Grape and Cable master punch bowl set; a marigold Christmas Compote; an amethyst Christmas Compote so dark you can't see through it; a marigold Grape and Cable sweetmeat; a marigold Grape and Cable whisky set and the shot glass are killer dark marigold; a super pretty marigold Grape and Cable dresser tray; a Grape and Cable pin tray; most of a Ranger dresser set; a marigold Grape and Cable cologne bottle; a marigold Wild Rose syrup jug; a Sad Dog novelty; a nearly electric blue Good Luck ruffled, and a few other items that I was forced to buy in two box lots to get the Ranger dresser pieces.



One bidder kept me from stealing the Christmas Compotes as they cost me \$1,100 each. If he had not been there, I may have gotten them for \$00-300 each. I still figure I got a good deal. He did out do me on the marigold Town Pump.



Beautiful country up here and have had a great time. Way more fun than sitting at my computer bidding on the Keystone auction today. How often do you find Christmas Compotes in the wild.

Now the long eight-hour drive back to the house tomorrow. Around 300 pieces of Carnival Glass 99% marigold. The deceased collectors/vendors had been collecting since the 1960s and travelled all over looking for marigold. Well, that's what five people told me. They were dearly loved in this town of 75 people. If you blink, you missed it.



(Later) Forgot to mention I got a pair of Crucifix candlesticks. They are killer with dark marigold, plenty of color, and super iridescence. They look brand new. I would nearly bet there is not a better or prettier pair out there anywhere.

P.S. Also forgot to mention I got a very pretty marigold edge-turned-up Grape and Cable saucer. My research states they should be turned up. Anyway, on the bottom was a clear printshop-made sticker that said Pete and Paula Bingham HOACGA 2006.

Cont. on page 14

**(On the Hunt series)**

**Hindsville, Arkansas, Estate Sale By Corky Cotton - Cont.**



**CARNIVAL GLASS COLOR By Rod Kaps - Cont.**



Clear



Smoke

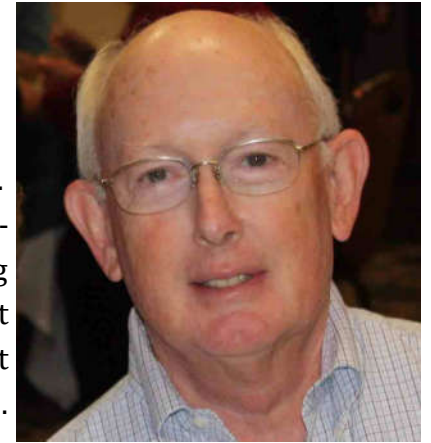


Black Amethyst

(white and marigold glass)

# Carnival Addict?

## By Walt Robinson



Hi! I'm Walt Robinson and I am quite obviously a Carnival Glass Addict. Sad to say, but true. How did it happen? Well, my introduction to Carnival Glass came in 1997. From that point forward I began gathering glass. For the first few years purchases were anything I could find that cost less than \$50. As time went by, I stumbled into a convention sale at the Southern California Carnival Glass Club in Fresno. Glass everywhere. Wow!

I found eBay. Shocking volume of glass available. We then moved to Texas. This move brought me into contact with the wonderful members of the Texas Carnival Glass Club. Collection expanded, costs increased, until finally a decision to sell in the spring of 2021.

Nothing particularly addicting about a little side hobby over a 24-year period. Actually, just lots of friendship and camaraderie.

That leads us to the last three years wherein I seem to have slipped into some rather compulsive behavior. I study every auction. I search the internet daily. I look into estate sales all across the country. I confess, I have little else to do and have become compulsive in my search for Carnival Glass.

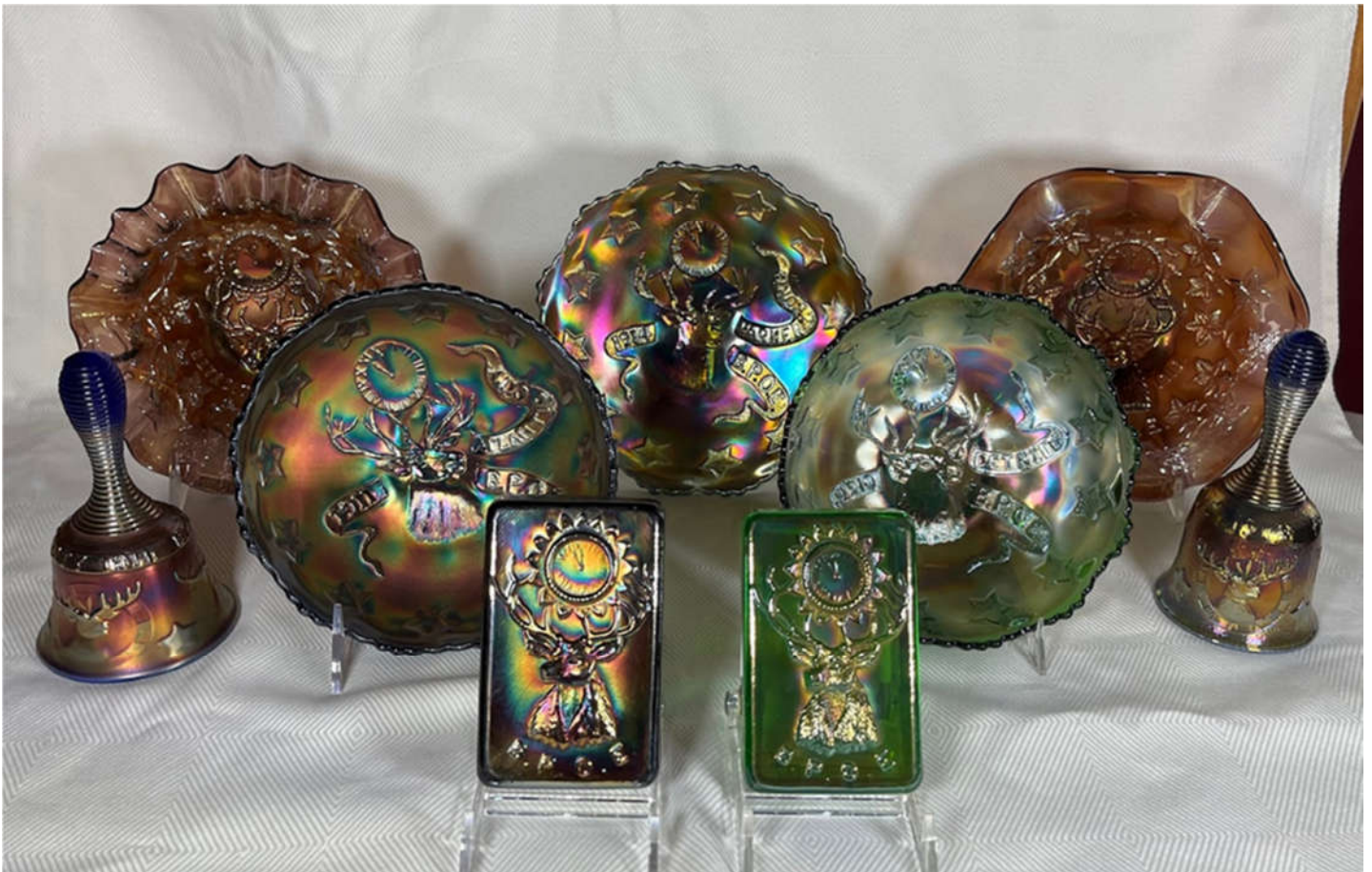
So, what are some examples of my compulsion? The first thing that comes to mind is Northwood Peacocks PCE bowls. I decided they were 'special' and set about finding some nice examples. I now have an adequate supply of these bowls in a variety of colors.



Next, I came across an estate sale in Davenport, Washington. The sale contained an exceptional collection of B.P.O.E. memorabilia collected by the Exalted Ruler, David Wendel. As I remember there were 14 carnival glass items in the sale. I bought several of them,

## Carnival Addict? By Walt Robinson - Cont.

including the elusive paperweights. I now have a quite pleasing little collection of Elks Carnival Glass that you will be able to view at the upcoming Texas convention this March in Brenham, Texas.



And then there is my addiction to the rather nice combination of marigold and moonstone or custard. When a piece of this kind surfaces, I pay attention. Fenton and Northwood simply did not make enough of this stuff.





## Carnival Addict? By Walt Robinson - Cont.



Lastly, the final straw. I have definitely lost control when it comes to Millersburg. My only salvation here is price. With above average iridescence it gets challenging to take a piece home. Still, I have gathered some nice examples part of which are displayed in my Millersburg cabinet.

So, what have I been doing over the last few years? Spending my days sleeping in the recliner? Not exactly. Instead, I have been scouring all sources for Carnival Glass, missing lovely Sam who is no longer with us, and acting like a Carnival Glass Addict.



**Aileen Lucile (Britt) Oppenlander**, age 82, of Manhattan, KS, passed away on January 4, 2024, at the Good Shepherd Hospice House in Manhattan. She was born April 11, 1941, at the

family farm in Junction City, the daughter of John E. Britt and Clara Lucile (Neuber) Britt. They later moved to Manhattan in 1947 where they started Britts Farm. She went to Manhattan High and Manhattan Area Vo-Tech. She was married to Robert Berroth. They had 3 children, Debbie, Christine and Greg. In 1981 she married Kenneth L. Oppenlander and gained 3 stepchildren, Carol, Steve and Nancy. Aileen worked as a purchasing agent for USDA Grain Marketing Research Lab for 35 years and made many life-long friends. She was an avid quilter. She loved hand quilting and made many things for family and friends. Aileen loved to spoil her grandkids and great grandkids most of all. She loved to garden and always had way too many flowers. She was preceded in death by her husband, Ken; her parents, John and Lucile; brothers Richard and Howard; son-in-law Don; stepdaughter Nancy; and Robert Berroth. Aileen is survived by her children, Debbie Kreiser, Manhattan, KS; Christine Thomas (Randy), Claremore, OK; Greg Berroth (Sheryl), Topeka, Kansas; and 5 grandkids and 7 great grandkids.

*In Loving Memory*

## Windmill and Double Dutch by Imperial Art Glass



Both the **Windmill** pattern and the **Double Dutch** pattern are shown in old Imperial catalogs as mold #514 and thus they were part of the same line and should be considered the same pattern. While pieces commonly referred to as Windmill have only one windmill in each scene and Double Dutch has two, each scene of all the Windmill pieces are unique. Windmill bowls are collar based while Double Dutch pieces have three feet. Windmill bowls come in a large size, a standard size and a small sauce. At left is a typical ruffled standard sized bowl in purple. In the center is a large sized bowl which is often incorrectly called the variant pattern as it includes birds to the right of the windmill. The large bowl has other differences in the design, so birds were not simply added to the standard bowl. The photo on the right shows the typical exterior rib pattern of the Windmill bowls and the oval trays shown below.

The large bowl has 42 scallops along the top edge, is about 8 to 9 inches across the top depending if it is ruffled or round and has a 3 1/4 inch base. The standard size bowl also has 42 scallops along the top edge, is about 7 to 8 inches across the top and has a 3 inch base.

The large bowls are found mostly in amethyst and occasionally in smoke. The standard sized bowls are also found mostly in amethyst with marigold, green and smoke also found fairly easily. Standard sized bowls in lime green, marigold on moonstone, teal and vaseline are more difficult to find.



The Windmill pattern also comes in small sauce bowls about 5 inches across that are found either ruffled or round. They have a similar but different design than the larger bowls as can be seen in this drawing in the center. They also have collar bases and a ribbed exterior. There are 33 scallops along the top

## Windmill and Double Dutch by Imperial Art Glass—cont.

edge. Sauces are mostly found in amethyst but other colors include amber, clambroth, green, marigold, smoke and violet blue.



The above five pictures are from a circa 1915 Imperial catalog titled, "Iridescent Glass Novelties". They show the various bowl shapes listed pictured in that catalog. Shown are a 5 inch crimped berry, 7 inch round berry, 7 1/4 inch crimped bonbon, a 7 piece berry set with an 8 inch round berry as the master, and a 9 inch berry, crimped. All have 4 digit mold numbers each starting with 514 and then followed by a 4, 5, 6, or 7 denoting the general size. The mold number ends in a letter A for round or C for crimped.



The Windmill pattern also is found in an oval tray shape. If the oval piece is flat, it is referred to as a dresser tray as shown in amethyst on the left. If the oval piece is ruffled or cupped up, it is referred to as a pickle dish as shown in the green ruffled example in the center and the marigold cupped to the right. These oval pieces have collar bases, a ribbed back and a scalloped edge. Dresser trays are found in amethyst, green and marigold. Pickle dishes are found in these colors and to a lesser extent in lavender, smoke and teal.

## Windmill and Double Dutch by Imperial Art Glass—cont.



These three pictures are also from the 1915 catalog and show the three oval pieces made from the same mold. It is also mold #514. It lacks a fourth digit as they are all the same size but does end in a letter: D for oval plate, B for oval celery and C for crimped pickle.



There are three different sizes of pitchers: The smallest is the milk pitcher at 6 1/4 inches tall. The midsize pitcher and the full size water pitcher are both 8 inches tall. The midsize pitcher has a smaller circumference and a smaller lip than the full size pitcher. Water sets, which include 6 tumblers, can be found with either the midsize or the full size pitcher.

Milk pitchers are easily found in amethyst, green, marigold and smoke. Milk pitchers in lime green and vaseline would be rare. The smaller standard size pitcher is hard to find in any color but green, lime green, marigold, smoke and vaseline are known. The full size standard pitcher is also hard to find but have been sold in amethyst, marigold, smoke or violet blue.



These pictures show the three sizes of pitchers in the Imperial catalog. 5143 is the 1/2 gallon or 32 ounces, 5142 is 38 ounces and 5141 is 23 ounces. The tumblers are listed simply as 514 and the water set is 5143. For the pitchers, the fourth digit represents the pitcher's size. When ordering, you needed to give the item number and description to get the correct piece.

# Windmill and Double Dutch by Imperial Art Glass—cont.



514—9½ oz. tumbler  
17 dozen in barrel

The large sized Windmill pitcher is 8 5/8 inches tall, has a circumference of 16 inches around, has a 3 1/2 inch collar base and has 19 scallops around the entire top rim.. The medium sized Windmill pitcher is 8 1/8 inches tall, has a circumference of 14 inches around, has a 3 1/4 inch collar base and has 17 scallops around the entire top rim. The milk sized Windmill pitcher is 6 1/4 inches tall, has a circumference of 12 inches around, has a 2 5/8 inch collar base and has 15 scallops around the entire top rim. The 9 1/2 ounce tumblers could be ordered separately with 17 dozen coming in one barrel.

While bowls display one scene, pitchers and tumblers have three scenes in three panels. These scenes of windmills and someone fishing are different across the three panels on tumblers and pitchers, as well as, across all the different shapes found in the Windmill and Double Dutch patterns.



**Double Dutch**, pictured to the left, has two windmills and a fisherman in a boat. Double Dutch bowls have three feet and the Floral and Optic exterior. This round flared bowl is in purple. The catalog picture is from an old Imperial

catalog and shows the mold numbers as 5141B and 5141C. #514 is the line, the fourth digit is the size and the final letter is often the edge shaping. Colors for Double Dutch include clambroth, green, marigold, purple and smoke. Double Dutch is often considered a unique pattern, but because Imperial



5141B—8½ inch footed berry  
4¼ dozen in barrel



5141C—9 inch footed salad  
4 dozen in barrel

gave both it and Windmill the same 514 mold number, it is more likely that Imperial considered them the same line and the same pattern.



**Stretch Glass Produced at Vineland Flint Glass Works**  
will be the topic of our *stretch out* discussion on  
**Thursday, March 14, 2024**

at 8 pm Eastern, 7 Central, 6 Mountain & 5 Pacific Time.

All are welcome to join this Zoom meeting

Come share in the discussion and show unusual stretch glass.

Even though the Discussion will be led by those who Zoom in to share their stretch glass,  
photos of the glass will be available on our website,  
[stretchglassociety.org](http://stretchglassociety.org) one week preceding the call.

Further information is available on our email: [info@stretchglassociety.org](mailto:info@stretchglassociety.org)

Many who have joined our discussions are thanking us  
for identifying their recent purchase.



# 2024 Convention Calendar

## **March Texas Carnival Glass Club**

March 6 thru 9

Washington County Expo Event Center and  
Hampton Inn and Suites, Brenham, TX  
Phone (979) 337-9898

## **April Heart of America Carnival Glass Assoc**

April 24 thru 27

Embassy Suites Hotel Kansas City MO,  
Phone: (816) 891-7788

## **May Keystone Carnival Glass Club**

May 8 thru 11

Holiday Inn, Grantville PA,  
Phone: (717) 469-0661

## **June American Carnival Glass Association**

June 12 thru 15

Comfort Inn Suites, Berlin OH,  
Phone: (330) 893-7400

## **July International Carnival Glass Association**

July 17 thru 20

Das Essenhaus Inn & Conference Center,  
Middlebury, IN Phone (574) 825-9447

## **August The Stretch Glass Society**

August 15 thru 17

Comfort Inn Lancaster County North, Denver PA  
Phone (717) 336-7541

## **August Millersburg Glass Association**

August 30 thru 31

Comfort Inn Suites, Berlin OH,  
Phone: (330) 893-7400

## **Sept New England Carnival Glass Association**

September 5 thru 7

Courtyard by Marriott, Cromwell CT  
Phone (860) 635-1001

**Please check club and auctioneers' websites for up-to-date information.**

## Club Officers

### **Texas Carnival Glass Club**

**President** – Emmett Morgan

713-857-2966 [ecmorgan@myalpha1.net](mailto:ecmorgan@myalpha1.net)

**Vice President** – Bob Sage

512-694-7421 [rsage1@austin.rr.com](mailto:rsage1@austin.rr.com)

**Treasurer** – Vernetta Shaffer

713-320-9567 [alohahouston@comcast.com](mailto:alohahouston@comcast.com)

**Secretary** – Randy Thach

316-722-5837 [rgthach39@gmail.com](mailto:rgthach39@gmail.com)

**Newsletter Editor** – Elaine Blair

972-965-1655 [elaineblair@att.net](mailto:elaineblair@att.net)

**Webmaster** – Sandy Sage

512-507-5586 [rsage1@austin.rr.com](mailto:rsage1@austin.rr.com)

### **Heart of America Carnival Glass Association**

**President** – Gary Sullivan

860-257-1816 [stevenandgary@cox.net](mailto:stevenandgary@cox.net)

**Vice President** – Chase Marquis

[airborn1996@aol.com](mailto:airborn1996@aol.com)

**Treasurer** – Tony DeMichael

217-824-6433 [hctonyd@ctifiber.com](mailto:hctonyd@ctifiber.com)

**Secretary** – Kathi Johnson

763-441-5587 [galenandkathi@yahoo.com](mailto:galenandkathi@yahoo.com)

**Newsletter Editor** – Steve Lindquist

860-490-3792 [hfdpilot@gmail.com](mailto:hfdpilot@gmail.com)

**Webmaster** – Galen Johnson

763-441-5587 [galenandkathi@yahoo.com](mailto:galenandkathi@yahoo.com)

**POSTMASTER**

**Direct any problems to**

**Distribution Manager:**

**Gary Sullivan**

**671 Ridge Road**

**Wethersfield, CT 06109**



Members: Please check your "Address Label". The numbers after your last name separated by a dash (-) is the date (month and year) for your membership or newsletter renewal.

